



Whickham Parochial Church of England Primary School

Nurturing minds and hearts through God's love

Prospectus

**WELCOME TO
WHICKHAM PAROCHIAL
CHURCH OF ENGLAND
PRIMARY SCHOOL**



Dear Parents

Whickham Parochial is one of the family of 56 Church Schools in the Diocese of Durham, in which over 11,000 children are educated. In the past, the Church of England did much to pioneer education in this country and this school represents the continuing partnership between Church and State at local and national level in the provision of education today.

We are so proud of our loving, nurturing school and the high standard of educational provision we offer to all our children.

We are a fully inclusive Church of England school at the heart of the Whickham community. Our school began its journey as the parish school of St Mary's Church in Whickham and our links with the church and Father Barry Abbott continue to be one of the defining features of our school. As such, our vision is to aim for excellent teaching and learning for all children, supporting them to reach their full potential whilst developing in our pupils the values of Christianity. In doing so, we hope to support our children in becoming compassionate, respectful, forgiving and tolerant young people.

We believe that parents have a vital role to play in partnership with the teachers in the education of their children. We hope that the information contained in this booklet will help you play your part. In true partnership we can achieve what we all aim for – a happy, successful and well-motivated child.

We hope that your child will find this Church School a happy place and a community in which they can grow and flourish.

Yours sincerely

G Surtees
Chair of Governors

R Walton
Headteacher

CONTACT DETAILS

Head Teacher	Mrs Rachel Walton
Chair of Governors	Mrs Gillian Surtees
Senior Leadership Team	Mrs Rebecca Jackson Mrs Louise Wilkinson
School Business Manager	Mrs Georgie Baird
School Address	Whickham Parochial Church of England Primary School Broadway Whickham Newcastle upon Tyne NE16 5QW
School Telephone	(0191) 4887867
School Email	whickhamparochialprimaryschool@gateshead.gov.uk
School Website	www.whickhamparochial.org
School Twitter	@parochialschool

CLASSIFICATION

Whickham Parochial is a Voluntary Controlled Primary School for pupils aged 4 – 11 years, with an intake of 30 in September 2023. The number on roll for September 2022 is 210 and the recommended total capacity is 210 pupils.

MISSION STATEMENT

Through a partnership between home, church and school we provide a stimulating and caring environment in which to develop the whole child, preparing them for life.

At Whickham Parochial we believe that every child is entitled to enjoy their childhood, celebrate their individuality and reach their full potential. We aim to do this through:

- Creating a caring school family living by Christian values.
- Celebrating everyone's strengths and efforts no matter how small.
- Valuing the opportunities we have to contribute to our community and the wider world.
- Offering wide ranging quality experiences that stimulate children's minds.
- Encouraging respect for others, positive behaviour and good manners.
- Building strong links between school, home and church.
- Preparing children for future challenges in a changing world.

We wish every child to take with them happy memories of Whickham Parochial into their future life.

SCHOOL AIMS, ETHOS AND PHILOSOPHY

At Whickham Parochial Primary School we provide an environment in which children are enabled to develop spiritually, culturally, mentally and physically. We believe children learn best where there is care. There is a high value placed on tolerance, security, praise and engagement.

We work on the belief that children enjoy learning when they are actively engaged in experience and that they respond best to encouragement, trust and respect.

A partnership of trust between their home and school is vital to the children's development. There will be many ways in which parents, teachers, support staff and governors can contribute to children's learning.

We recognise a need to develop in children a sense of their own worth and we acknowledge the contribution they make to the learning of others. At Whickham Parochial, children will be presented with practical ways of responding to experience, expressing themselves in a variety of ways, communicating and using their thinking skills.

We believe that motivation, satisfaction and respect are fundamental ingredients for successful learning at all stages. Classroom organisation will include individual learning, group activities and class experiences.

Our purpose at Whickham Parochial is to provide a happy, secure learning environment, where children are stimulated through first-hand experience to develop as individuals, with the ability to make rational judgements and communicate expressively to one another.



GENERAL INFORMATION

The full name of the school is, "Whickham Parochial Church of England (Controlled) Primary School". Dr. Robert Thomlinson, who was then incumbent of Whickham Parish Church, founded the school in 1714. It was built as a charity school in order to provide education for the children of the parish. It is reputed to be the oldest Church school in the Diocese of Durham. As a Church of England Primary School, we have an ethos statement:

'Recognising its historic foundation, the school will preserve and develop its religious character in accordance with the principles of the Church of England and in partnership with the Churches at parish and diocesan level. The school aims to serve its community by providing an education of the highest quality within the context of Christian belief and practice. It encourages an understanding of the meaning and significance of faith, and promotes Christian values through the experience it offers to all its pupils.'

In November 1971, the old school in the village closed its doors as an educational establishment and the pupils were transferred to the present building in Broadway.

The facilities are purpose built and include a library and community room as well as classrooms. The school also benefits from extensive playing fields, an outdoor area for the Reception and Year One, a Forest school area and an outdoor classroom.

The school serves the private housing estates in the surrounding area, including Fellside Park. Additionally, some pupils come from locations outside the catchment area and the school is regularly over-subscribed.

HOME-SCHOOL LINKS

Education is a continuous process that starts in the home. Central to a good school ethos is parental involvement in its life.

At Whickham Parochial, we encourage links between parents and teachers. The education of our children involves a three-way partnership, which links child, parent and teacher. When this partnership is complete, the child will always benefit.

It is accepted that parental involvement produces positive results for the child and the School. We believe that to state clearly what the school agrees to provide, along with the statement of the part that parents can play, reflects a willingness to work in harmony, thus enhancing the opportunity of the children.

Home-School Partnership

The School agrees to:

- Provide a full and balanced curriculum
- Strive to educate each pupil to the best of his or her ability
- Support in the development of good personal and social skills
- Prepare your child for their next step both in the content we teach and in the learning and study skills we develop
- Give your child opportunities for reflection and mindfulness and help them to develop their citizenship
- Provide records and information about your child's educational progress as well as the child's development in practical and social skills
- Teach your child how to stay safe
- Let you know immediately if your child is having any difficulties at school
- Keep you informed about new policies and developments in school

All parents are welcome to feel involved with the school. It is not essential to seek an appointment to see the Headteacher. Whenever a problem or difficulty arises, parents are free to call in and we will help if we can.

The School hopes that the parents will:

- Support and work with the school and encourage a positive attitude to education
- Ensure that their children attend school regularly and punctually
- Ensure that their children have a reasonable night's sleep before coming to school
- Ensure that their children wear school uniform and have the required equipment
- Attend meetings at school to discuss the children's progress and become familiar with the work of the school
- Inform the school of any factors which may affect their children's performance in school
- Contribute to children's progress by engaging with homework tasks such as hearing them read regularly
- Encourage their children to use social media, including mobile phones responsibly and not to the detriment of others
- Inform the school of any changes of personal data – especially emergency contact details and email addresses, to help us keep in touch with you.

THE SCHOOL CURRICULUM

In September 2014 we introduced the government's new curriculum to our school. The curriculum offers a 'slimmed down' programme of study for us to deliver to the children as a minimum requirement.

This means that we now (as we always have) deliver a 'curriculum plus', meaning that we provide children with the skills and experiences laid out in the statutory document and also with additional skills and experiences which we feel are vital to support children and prepare them on their way to adulthood.

This curriculum has been adapted and refined since then and we are proud of the quality and depth of what we offer.

Staff and other stakeholders discussed and agreed upon some 'drivers' for our new curriculum. We decided that we wanted our children to have and live by Christian values. We wanted them to know their place in the world and contribute to it. We knew that, in this digital age, we needed them to be fantastic communicators. Finally, we decided that the children would need to be problem solvers. These values and decisions are the driving force behind our teaching and all of our interactions with the children. We see these aspects of the curriculum as something we nurture through lessons but also throughout the whole school day. You can read about our drivers in more detail on our website.

The curriculum arrangements will include special provision to give additional help to any pupils with **Special Educational Needs or Disabilities**. Particular emphasis will be placed on the areas of English and Mathematics. All arrangements will be planned to provide each individual pupil with maximum support to develop his or her full potential.

No part of the curriculum is encouraged or discouraged as a result of gender – all children have **equal opportunities** and equal access to all parts of curriculum in this school.

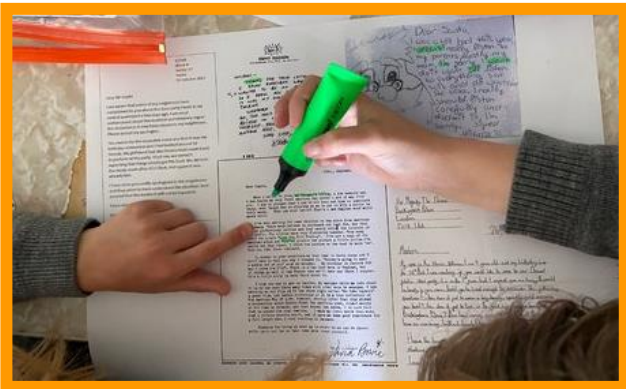


THE CURRICULUM

The school has a set of working policy documents covering each area and subject of the curriculum. These policies are considered, developed and revised by staff through regular in-service sessions both at school and elsewhere. Copies of these documents are available at school for consultation by parents and on our website.

English

The English Curriculum is delivered using the Programmes of Study which build skills, knowledge and experiences of all elements of English from the 2014 National Curriculum. In our Reception class, the Development Matters Document is used. Early Learning Goals are worked



towards to ensure continuity and progression from the Foundation Stage through to the National Curriculum. English skills are developed through robust and systematic programmes and applied in inspiring and engaging ways. We endeavour to provide motivating purpose for our reading and writing and try to apply our skills in relevant tasks. Our core texts are carefully chosen to be engaging to our children and inspire a lifelong love of reading.

Mathematics

The National Curriculum establishes five areas of content: number, algebra, measures, shape and space and handling data. Our programmes of study aim to prepare the children for the demands of society in general and for their subsequent learning and education in mathematics in particular. Children will be given opportunities to become competent in handling mathematics mentally and to make effective use of calculators and computers.

Ultimately, we aim to produce children with lively, enquiring minds who have a favourable attitude to learning mathematics and who enjoy this subject.



Science

We use a variety of teaching and learning styles in science lessons. Our principal aim is to develop children's knowledge, skills, and understanding. Sometimes, we do this through whole-class teaching, while at other times, we engage the children in an enquiry-based research activity. We encourage the children to ask, as well as answer, scientific questions. They have the opportunity to use a variety of data, such as statistics, graphs, pictures and photographs. They use ICT

in science lessons, where relevant, because it enhances their learning. They take part in role-play, discussions and debates, and they present reports to the rest of the class. They engage in a wide variety of problem-solving activities. Wherever possible, we involve the pupils in real scientific activities, e.g. investigating a local environmental problem, or carrying out a practical experiment and analysing the results.

Computing

Pupils will be taught to extend the range of IT tools that they use for communication, investigation and control, becoming discerning in their use of IT, select information, sources and media for their suitability for purpose and assess the value of IT in their working practices. This national emphasis on Information and Communications Technology now presents the school with the opportunity to consider a more extensive and co-ordinated development programme in the coming years.



Humanities

The National Curriculum specifies History and Geography as two of the foundation subjects. Our thematic approach ensures that the key historical and geographical concepts are contained within the programmes of study followed by our children. In this way we are able to maintain the important wholeness of learning across the curriculum, while maintaining the essential disciplines contained within these two subject areas.



Art and Design

Art and Design and Design and Technology are taught as discrete subjects which builds skills and experiences, but are also utilised as a method of recording and expression across the curriculum. Among the opportunities provided will be painting, drawing, printmaking, textiles, collage and modelling. Children will be introduced to varied works of art from a diverse body of artists from across history and cultures.

Music

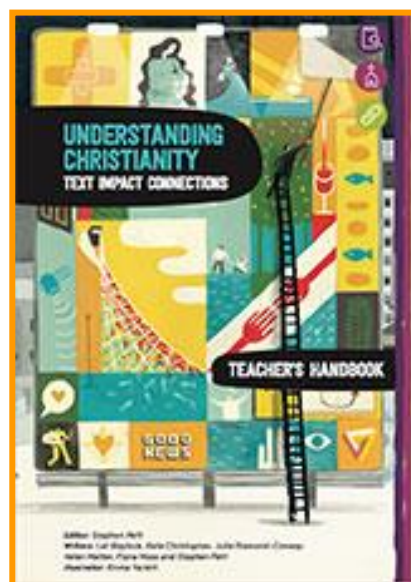
Music is taught as a discrete subject using the Charanga music programme. Additionally, music tuition from a qualified music teacher is provided to help children begin their proficiency in a musical instrument (usually trumpet) is delivered throughout Year 5. We provide opportunities for children to undertake a balanced programme of activities involving performing and listening to music in a variety of styles from different periods and cultures. Ultimately, our goal has to be to produce children who enjoy both the making of and listening to music. Specialist music tuition is available to children in school through the peripatetic music service.



Religious Education

Religious Education is taught in accordance with the LA's Agreed Syllabus and The Diocese of Durham Syllabus, copies of which are available in school for consultation by parents. These reflect that the religious traditions in this country are in the main Christian. However, in order that we provide a relevant syllabus for the needs of our children, and to promote high levels of religious literacy and tolerance, we also explore and discuss the nature of other religious beliefs and cultures, as they exist in our society.

From September 2020 we have been following the Diocesan programme of study which incorporates the document "Understanding Christianity". We are proud to ensure that our curriculum reflects the standards set by the Church of England Statement of Entitlement (2019):



In a Church of England school, the pupils and their families can expect an RE curriculum that enables pupils to acquire a rich, deep knowledge and understanding of Christian belief and practice, this should include the ways in which it is unique and diverse. Parents can expect the use of high-quality resources, for example, the Understanding Christianity resource. Pupils can expect that teaching and learning in Church schools will use an approach that engages with biblical text and theological ideas. Pupils can expect that a Church school RE curriculum will engage and challenge them through an exploration of core concepts and questions. They can expect Church schools to provide meaningful and informed dialogue with a range of religions and world views.

It is expected that all children will be involved in religious education, but alternative arrangements can be made for pupils whose parents request that their child be excused from receiving religious education. Such requests should be made in writing and addressed to the Headteacher.

Modern Foreign Languages

French is taught across both key stages. It is a statutory requirement in Years 3, 4, 5 and 6. In Reception, Years 1 and 2 children are introduced to the basics, such as numbers, names and greetings, even though it is not a statutory requirement.

Physical Education

Physical Education makes a unique contribution to children's education. Our children learn skills in body management in a variety of settings. They will come to understand how their bodies respond to activity. They will develop habits leading to healthy lifestyles and appreciate the means through participation in physical activity. Our children will participate in athletics, dance, games, gymnastics, outdoor education and swimming. We also add 'experience' P.E. opportunities which have included Karate, fencing and golf!

At Whickham Parochial we aim to provide a high-quality physical education curriculum that inspires all of our pupils to succeed and excel in sport and other physically demanding activities.

We aim to provide opportunities for our pupils to become physically active and confident in a way which supports their health, wellbeing and fitness as they move towards making their own choices as young adults and beyond.

In addition, we aim to provide opportunities for children to develop their potential and compete in activities that will help them build character and embed values such as teamwork, fairness and respect.



EXTRA CURRICULAR ACTIVITIES

Our aim to produce children who are active participants is achieved, in part, by providing varied extra-curricular activities. These activities currently include:

- Little Kickers (Football)
- Football Club
- Irish Dancing
- French Club
- Basketball
- Tennis
- Choir
- Karate

OUTDOOR LEARNING

We are very fortunate to have a lot of outdoor space at our school which we try to make the best possible use of. We take children outside to learn in our forest area and our outside classroom whenever we can and are very fortunate to benefit from Forest School trained staff.



EDUCATIONAL VISITS

Much that is of value, in broad educational terms, can be gained from the local and wider environment. This complements themes being undertaken in the classroom and thus supports the work of the school. Where admission and travel costs are involved, we ask for voluntary contributions from parents and stress that children will not be treated differently according to whether or not their parents have made a voluntary contribution. It must be pointed out that the activity can only take place if there are sufficient voluntary contributions forthcoming.

For certain visits, consent from parents is sought. However, for short visits involving no charges and within reasonable vicinity of school this is not required as we ask for an umbrella consent to be given for short trips during which no transport is required. We will always inform you of these visits.

HOMEWORK

Homework is an important part of a child's education, and can add much to a child's development. We see homework as an important example of cooperation between teachers and parents/carers. Homework plays a positive role in raising a child's level of attainment. However, we also acknowledge the important role of play and free time in a child's growth and development. While homework is important, it should not prevent children from taking part in the activities of various out-of-school clubs and of other organisations that play an important part in the lives of our pupils. We are well aware that children spend more time at home than at school, and we believe that they develop their interests and skills to the full only when parents/carers encourage them to make maximum use of the opportunities available outside school.

The content of the homework curriculum comprises of:

- Reading aloud from their home reading book and answering questions
- Practicing and discussing spellings / phonemes
- Practicing a maths rapid recall skill from a previous year group
- Spending time on Times Tables Rockstars (from Year 2)
- Completing tasks on Reading Plus (from Year 4 final half of summer term)
- Completing the Christian reflection task
- Doing at least one act of kindness

COLLECTIVE WORSHIP



Collective worship is a very important part of our day at Whickham Parochial. Assemblies happen in the main hall four days each week, with an additional assembly delivered and shared in each classroom. We also consider the prayers that are said at the beginning and end of each day to be a way to join together to reflect on the way we approach and understand our school experience.

Primarily our assemblies explore the lessons we learn from the Gospel and consider ways that we understand and live out our Christian values. We explore why this is important for ourselves and our

communities – even for those of us who are not Christian. Sometimes, our assemblies will also have a topical theme that links to our Christian approach to an event (such as Remembrance Day or Black History Month) or to an issue (such as anti-bullying, or our tolerance and respect for differences). We will let you know about this on social media.

In addition to our school assemblies, Father Barry from St Mary's in Whickham also leads Eucharist once each term. This is a lovely opportunity for members of the church community to come together in our school for a service. Should you wish to join us, please check the calendar on our website as we will update it as soon as services are arranged.



All parents have the right to withdraw their children from Acts of Collective Worship. If you feel that you wish to do this, please make a request in writing and submit it to the Headteacher.

The school was inspected by the Church of England Inspection team in June 2018 and found to be 'Outstanding' in all areas.

"The distinctiveness and effectiveness of Whickham Parochial as a Church of England school are outstanding"

RELATIONSHIP AND SEX EDUCATION

At Whickham Parochial C of E Primary School, we understand our responsibility to deliver a high-quality, age appropriate and evidence based relationships, sex and health curriculum for all of our pupils. Both our policy and practise will 'ensure pupils are able to cherish themselves and others as unique and wonderfully made, and to form healthy relationships where they respect and offer dignity to others.' (SIAMS schedule 2018)

The Relationship and Sex Education policy at Parochial is tailored to the age, and physical and emotional maturity of pupils, and ensures that boys and girls are prepared for the changes that adolescence brings, drawing on knowledge of the human life cycle.

All pupils will be taught the aspects of sex education outlined in the primary science curriculum. We are currently using a range of resources to support our curriculum, but it is primarily delivered using materials from SCARF (Safety, Caring, Achievement, Resilience, Friendship) which is our PSHE programme of study.

Relationships and health education are statutory in primary school and parents do not have the right to withdraw their child from these subjects.

Parents have the right to request that their child be withdrawn from some or all of sex education delivered (other than what must be taught as part of the statutory science curriculum). The head teacher will discuss the request with parents and, as appropriate, with the child to ensure that their wishes are understood and to clarify the nature and purpose of the curriculum. We hope you will trust us with this important task, but we will always respect your views.



ATTENDANCE AND ABSENCE

Schools are required to publish attendance data and distinguish between authorised and unauthorised absence. It is important that parents notify the school on the day of any pupil absence or whenever possible in advance of any proposed absence.

Pupil attendance for the academic year 2019-2020 (until school closure) was 97.1%

Punctuality and good school attendance are essential for any child to make progress and reach their full potential. The government have set a target of a minimum of 96% attendance for every child in school and it is important that we strive to achieve this. Research clearly shows that children with attendance below 95% achieve less well at school than other pupils.

THE SCHOOL DAY

Daily Timetable

8.50 a.m.	School commences (Gates open at 8:40am and close at 8:55am)
10.30a.m. – 10.45 a.m.	Morning break
12.00p.m. – 1.00 p.m.	Lunch break (EYFS and Key Stage 1)
12.15p.m. – 1.10 p.m.	Lunch break (Key Stage 2)
1.15p.m. – 3.20 p.m.	Afternoon session
3.20 p.m.	School finishes

Parents are asked that their children attend school punctually, as activities begin straight away.

BEHAVIOUR AND DISCIPLINE

Behaviour in our school is generally excellent and behaviour for learning is a particular point of pride. The school has a Good Behaviour Policy, which is available to parents on request and on our website. Good behaviour and attitudes are expected from all children and modelled by adults across school. We have a 'Good to be Green' system that is used across the key stages but we are always of the mind that preventing bad behaviour is far preferable to disciplining it. The member of staff responsible for your child will deal with minor disciplinary matters.



All physical harm or bullying behaviour is recorded and reported to Senior Leaders through our online reporting system.

The Headteacher or Deputy Head deals with major disciplinary matters. Parents are informed of persistently challenging behaviour and we will work together with you and any other agencies we deem to be appropriate to seek the cause of the problem and find a solution.

SCHOOL MEALS

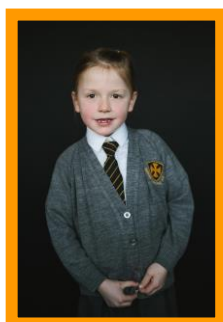
School meals are cooked on the premises in accordance with a well-planned and varied diet. The meals are served in two sittings.

Dinner money is payable via Parent Pay – parents can get help to register by contacting our school business manager, Mrs Baird. The cost of a school meal is £3.00 and the menu can be viewed on our website.

Those children who would prefer to are welcome to bring a healthy and strictly nut-free packed lunch.

SCHOOL UNIFORM

The school has a uniform and parents are strongly encouraged to dress their children in the uniform in order to encourage a pride in the school and to prevent the wearing of unsuitable clothing.



School blouses, summer dresses, polo shirts, cardigans/pullovers embroidered with the school badge and ties are available for purchase from our supplier, Logos Unlimited. We expect that the only jewellery worn will be a watch and possibly small, studded ear-rings. Hair should be neat and of a natural colour. Long hair is best tied back and should never restrict your child's vision. Hair must be tied for P.E. Make-up, including nail varnish, should not be worn.



Winter uniform

Summer uniform

Trousers/skirts/pinafores	grey	(as winter)
Summer Dresses		yellow check
Shoes	black	black
Shirts/Blouses	white	gold polo t-shirts
Jumper / Cardigan	grey v-necked	(as winter)
Tie	gold/black	not worn with polo t-shirts

Please note that pupils in Reception Class will wear gold polo shirts throughout their first year in school.

P.E. Uniform

Children in all classes wear white t-shirts and black shorts. In colder weather, black tracksuit bottoms or black sport leggings with a warm sports top are useful for outdoor games. We provide a white P.E. and a grey hoodie with the school logo for every child each year.

No jewellery should be worn on P.E. days

Trainers are required for outdoor games.

All clothing should be clearly marked with the child's name.



The link to our supplier, Logos Unlimited, can be found on our website under 'School Uniform'.

“FRIENDS OF WHICKHAM PAROCHIAL SCHOOL”

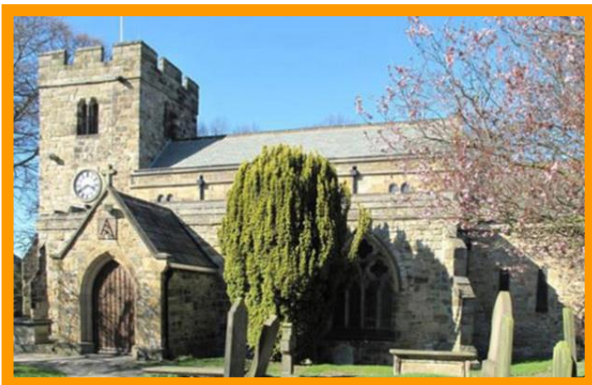
The Friends is an active association of parents who work closely with the school for the benefit of all children. Their aim is to raise funds to allow the school to purchase equipment and subsidise activities that the school could not otherwise afford. The adventure trail, stage, gardening areas and iPads are examples of projects funded by the Friends.

There are a number of different activities during the year, including; Summer and Christmas Fayres, sponsored activities, Film nights and discos. There are also social events for parents and the committee meet regularly to discuss future events.

If you would be interested in meeting other parents and helping school, please contact the school office to volunteer.

The “Friends” are established as a most supportive group and the School benefits considerably from their efforts.

LINKS WITH ST MARY’S CHURCH



Although we have moved away further away from our original site next to the church. We continue to be the Parochial school of St Mary’s and our partnership with St Mary’s Church continues to be a defining character of our school. We feel very fortunate to be a part of the Christian community and feel this relationship helps us to create a wonderful learning community in which the Christian Faith is valued and taught.

A very important part of our relationship with the church is our Eucharist Service, which takes place once each term. Please see our calendar for upcoming dates if you would like more information.

Additionally, we work closely with Father Barry from St Mary’s to prepare our children to continue their relationship with the Christian church by offering voluntary ‘Reception to Holy Communion’ lessons in Years 4, 5 and 6 children in the spring term. These sessions prepare children to become communicant members of the church congregation.



ADMISSION INFORMATION

We are very pleased that you are considering our school for your child. We fully intend to fulfil the trust in us that this shows and work with you to provide the very best education for your child.

We are a fully inclusive Church of England school, which means that faith is not a deciding factor in the admissions process. Primary school places in maintained schools such as Whickham Parochial are allocated at council level by Gateshead Council.

The admission process involves an online application form, a link to which, in addition to a link to this prospectus and the most recent Gateshead admissions policy, can be found on our website under the menu 'About' on the page "Admissions to Parochial".

We operate under a slightly different criteria that most Gateshead schools in that sibling links are a higher priority for us than catchment area. The over-subscription criteria for our school is as follows:

Order of Priority	Over-subscription Criteria
Criteria 1	Children in Public Care (and as deemed under Section 22 of the Children Act 1989) including a child who was previously "looked after" but immediately after being "looked after" became subject to an adoption, residence, or special guardianship order Children who appear to have been in state care outside of England and ceased to be in state care as a result of being adopted.
Criteria 2	Children who live in the school's catchment area and who will have a brother or sister at the school during the coming academic year.
Criteria 3	Other children who will have a brother or sister at the school during the coming academic year
Criteria 4	Other children who live in the school's catchment area.
Criteria 5	Other children who have exceptional medical or social grounds
Criteria 6	All other children

Please see our website for the most recent admissions information. If you would like to arrange a visit, please email the school or give our office a call.

Email: whickhamparochialprimaryschool@gateshead.gov.uk

Call: 01914887867